



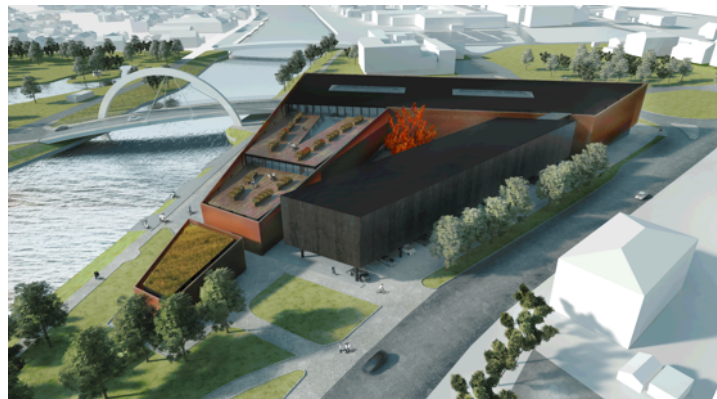
## Smart symbiosis of city and campuses

13 June 2017 | Live Baltic Campus

Päivi Keränen, Metropolia UAS & Emils Rode Riga Planning Region

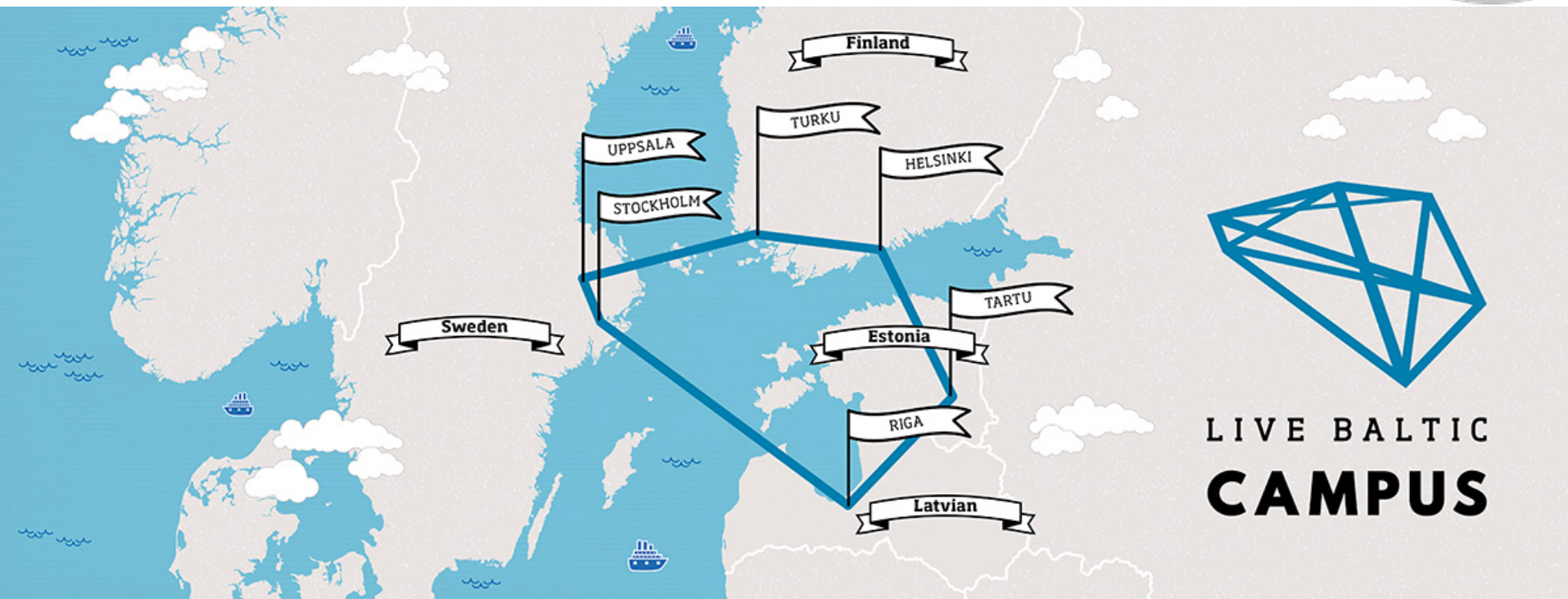








## 8th Annual Forum of the EU Strategy for the Baltic Sea Region





## Campus & City (F. Witlox 2017)

- urban, culture, economy, landscape
- catalytic conditions (surrounding neighborhoods, business parks)
- connectivity (pedestrian, public and private transport)
- balanced mix of uses (specialized clusters + diversification)
- accommodation (housing, boarding, guest, hotel)
- communication (café-bars, plazas, parks, conference)
- open/public ground floors (services, retail, gastronomy, exhibitions)
- high-quality and permeable public space (accessibility, comfort)
- strategic tectonic flexibility (responsiveness to changing needs)





**Strategic**  
Policy makers

Stimulate innovation

Stimulate collaboration

Increase quality of place

Support culture

Support image



**Functional**  
Users

Support user activities

Increase user satisfaction

Increase flexibility



**Financial**  
Controllers

Increase profitability

Reduce risks

Reduce costs



**Physical**  
Technical managers

Reduce footprint (m2)

Reduce footprint (CO2)

Objectives of “campus management” (Den Heijer, A. 2017)

[https://  
managingtheuniversitycampus.files.wordpress.  
com/2017/04/smart-campus-tools-  
management-summary-english.pdf](https://managingtheuniversitycampus.files.wordpress.com/2017/04/smart-campus-tools-management-summary-english.pdf)



## How can campuses contribute for better, smarter cities?

- **Knowledge building & sharing** - providers of new knowledge and innovation hubs
- **Testing grounds** for new solutions
- **Development projects and interventions** with status quo
- **Debaters and ideators** - studying and introducing different scenarios
- **Partners** for following up the urban development processes
- **Behaviour and attitude influencers** - learning community for both future urban developers and dwellers



## Live Baltic Campus Helsinki & future Myllypuro campus





## Smart symbiosis of campus and city in Myllypuro:

- Location is an act of regional development - currently no higher education institutes in the Eastern Helsinki
- Balancing out the demographics - currently 20-35 year olds missing
- Sustainable urban transport - emphasis on using the metro or cycling
- Fostering urban innovations - 10 ECTS innovation project studies for every student, integration with curricula, thesis subjects + testing facilities
- Calling also for establishment the campus community: relations to the neighbourhood, but also partnerships with public and private actors in fields of the Health and Wellbeing and Construction



## Symbiosis in practise - Helsinki:

- Plan for enhancing the local economic development with city - campus collaboration; will be published after summer
- A consortium (City, Metropolia, Universities of Helsinki and Aalto) to follow-up on the long term development of the Myllypuro area
- Establishment of competence hubs 'LivingWell' and 'Orchestrating Best Spaces Finland'
- Spaces for collaboration and testing both within the campus and outside
- Dialogue between residents, Metropolia and City of Helsinki - visibility and presence in the area e.g. Pop-up Metropolia Campus event



## 8th Annual Forum of the EU Strategy for the Baltic Sea Region



Photo: Didzis Grodzis



## The Elements of Knowledge City

### **Knowledge**

mostly in digital form

### **Places**

Built environment + Natural environment

Mental space / the imaginary

### **Money**

the glue that binds them



## 8th Annual Forum of the EU Strategy for the Baltic Sea Region



Photo: Didzis Grodzis



## Knowledge of Place / Place of Knowledge

### Cities have inertia:

- the built form shapes our thinking and feeling
- new form emerges based on the known form



## 8th Annual Forum of the EU Strategy for the Baltic Sea Region



Photo: Didzis Grodzs



## 8th Annual Forum of the EU Strategy for the Baltic Sea Region



Photo: Erasmus University Rotterdam, Jeroen Musch



Photo: University of Latvia, Toms Grinbergs



## **Students on stairs:**

Rotterdam Erasmus University vs. Riga, University of Latvia

Same stairs, different cities/campuses/unis

Different students > same result?



## 8th Annual Forum of the EU Strategy for the Baltic Sea Region

---



Photo: Didzis Grodzs



## Transferring knowledge / Transforming knowledge

Pre-modern unpaved canal banks > Post-modern socio-ecological urbanism

What can we learn in another city and use in our city?

Local self-knowledge

+

universal language

= Globally valid solutions/responses/designs/place



## 8th Annual Forum of the EU Strategy for the Baltic Sea Region



Photo: Didzis Grodzs



5 - 6 October 2017:  
**Livable City Forum Riga** +  
Schmaeling Conference  
'Architecture of Knowledge Economy'

**Welcome!**

[www.livebalticcampus.eu](http://www.livebalticcampus.eu)



LIVE BALTIC  
**CAMPUS**

